

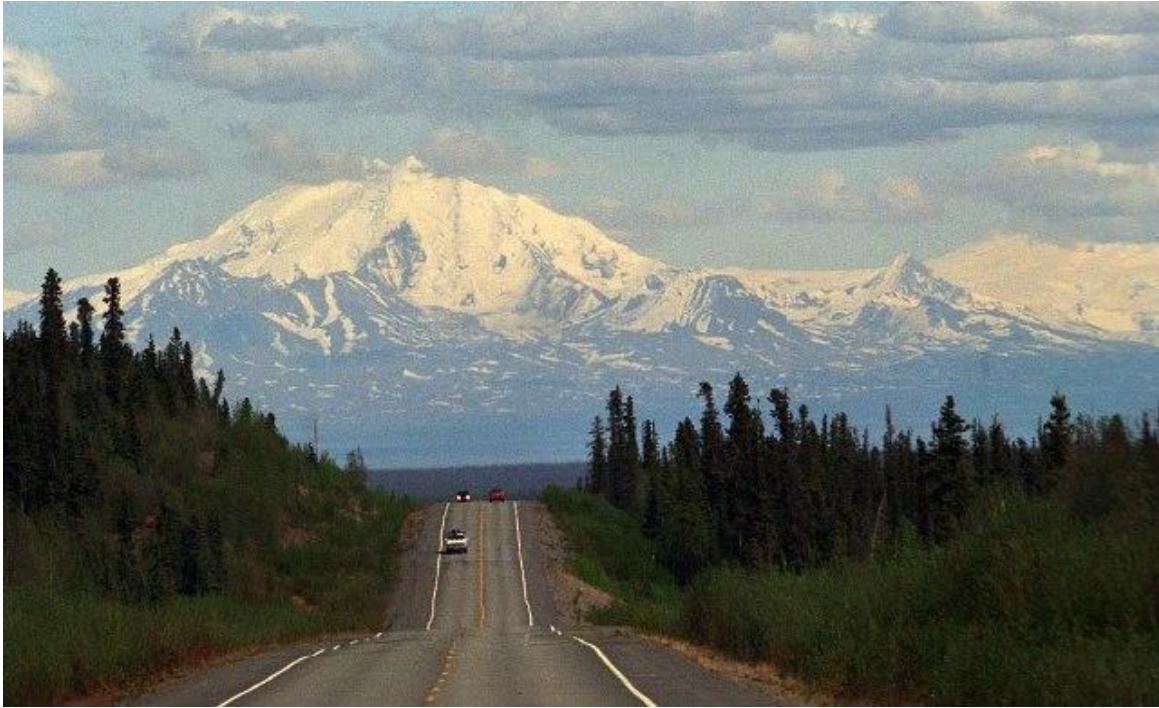
Wrangell-St. Elias Mountains in Ahtna Country



Mountain view from Willow Lake on Richardson Highway



Map of region



Mt. Drum (12,010 ft.) as seen just outside Glennallen on the Glenn Highway



Mt. Drum from the author's cabin in Tazlina (c. 1995)



Mt. Sanford sunset (16, 237 ft.)



Mt. Wrangell (14, 163 ft.)

Google Earth Map 1: Wrangell Mountains from Space



1. Mt. Drum (12,010 ft) (*Hwdaandi K'elt'aeni*) possibly “One with hole” (crater) from Ahtna *daan* (hole)
2. Mt. Sanford (16,300 ft) (*Hwdiindi K'elt'aeni*) possibly “One we can see” (more clearly because it's taller) from Ahtna *diin'* (“to see” or “know”)
3. Mt. Zanetti (13,009 ft)
4. Mt. Wrangell (14,163 ft) (*K'elt'aeni*) (*K'eledi* when erupting; it's an active volcano)
5. Glennallen (*Ciisik'e Na'*)
6. Klutina Lake (*Tl'ati Bene'*) *Ben* means “Lake”
7. Copper Center, also called Kluti Kaah (*Tl'aticae'e*)
8. Mt. Blackburn (14,000 ft) (*K'ats'i Tl'aadi*)
9. Copper River (*'Atna' Tuu*) from which the Ahtna People derive their name (Ahtna)
10. The author's cabin is in between 5 and 7 on the Copper River

Tazlina and Klutina Lakes Region

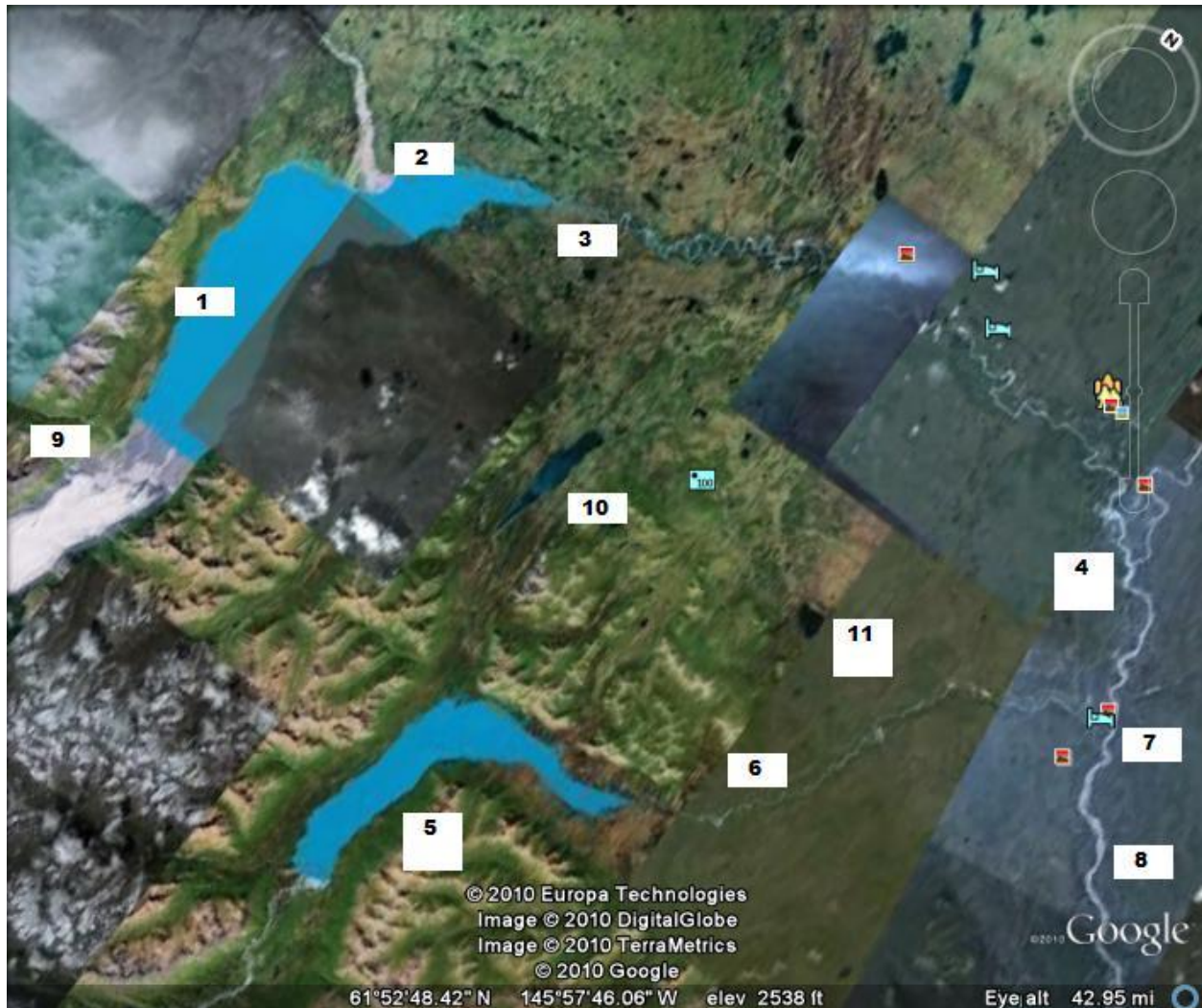


Tazlina Lake and Tazlina Glacier in distance. The long-abandoned Tazlina Lake Village was near this outlet.



Klutina River from Craig-Brenwick Rd.
Klutina Lake is in the valley about 20 miles away in the distance.

Google Earth Map 2: Tazlina & Klutina Lakes from Space



1. Tazlina Lake (*Tezdlen Bene'*) *Ben* means "lake"
2. Mendeltna Creek and site of old village (*Bendil Na')* *Na'* means "creek or river"
3. Tazlina River (*Tezdlen Na')* lit. "Swift River"
4. Confluence of Tazlina R. and Copper R.
5. Klutina Lake (*Tl'ati Bene'*)
6. Klutina River (*Tl'atii Na')* lit. "Undercurrent River"
7. Confluence of Klutina R. and Copper R., Copper Center / Klutii Kaah (*Tl'aticae'e*)
8. Copper River (*'Atna' Tuu*)
9. Tazlina Glacier (*Tezdlen Luu*) *Luu* means "glacier"
10. St. Anne Lake (*Ts'iisi Bene'*) lit. "Glare Ice Lake"
11. Hudson Lake